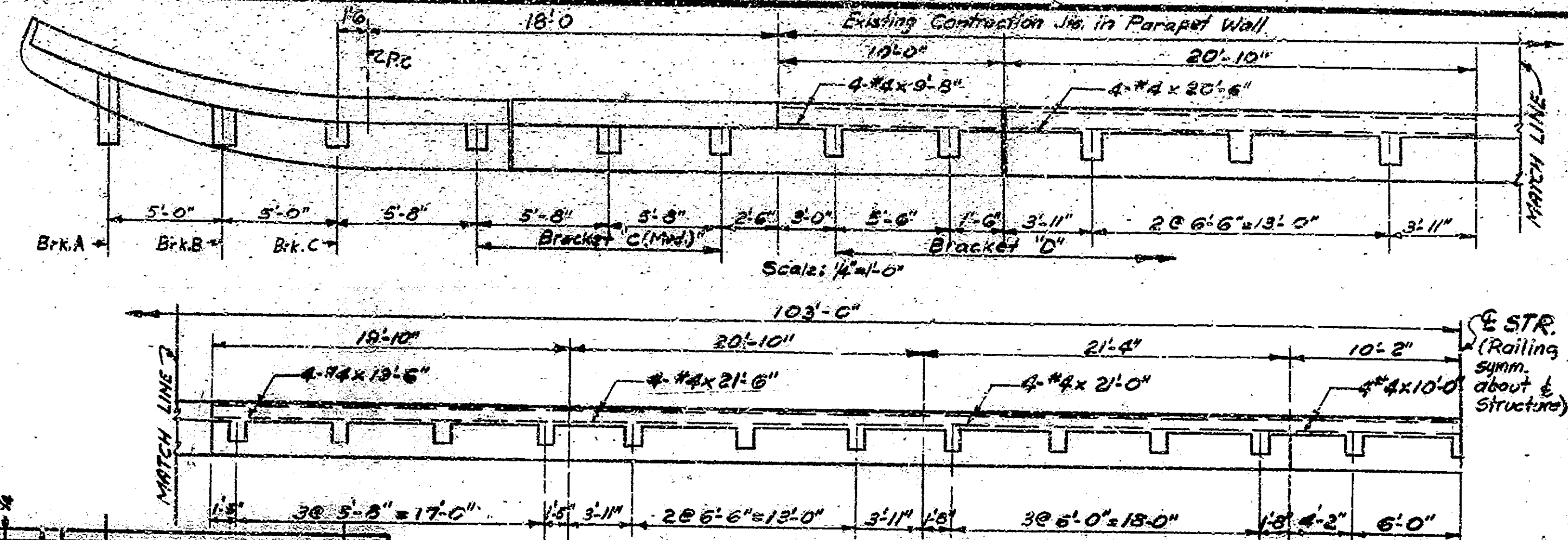
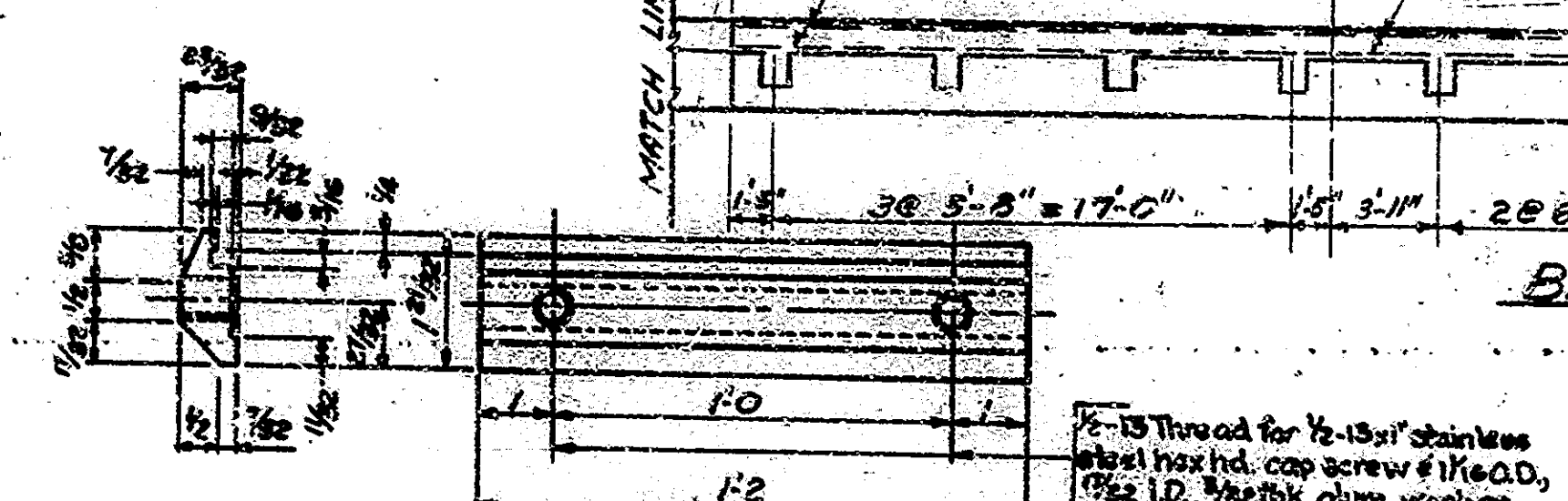


PLAN OF GUARD RAIL AT WING
 Scale: 1/8" = 1'-0"



BRACKET SPACING
 Scale: 1/8" = 1'-0"



SPECIAL BARRIER-RAIL CLAMP BAR
 Not to Scale

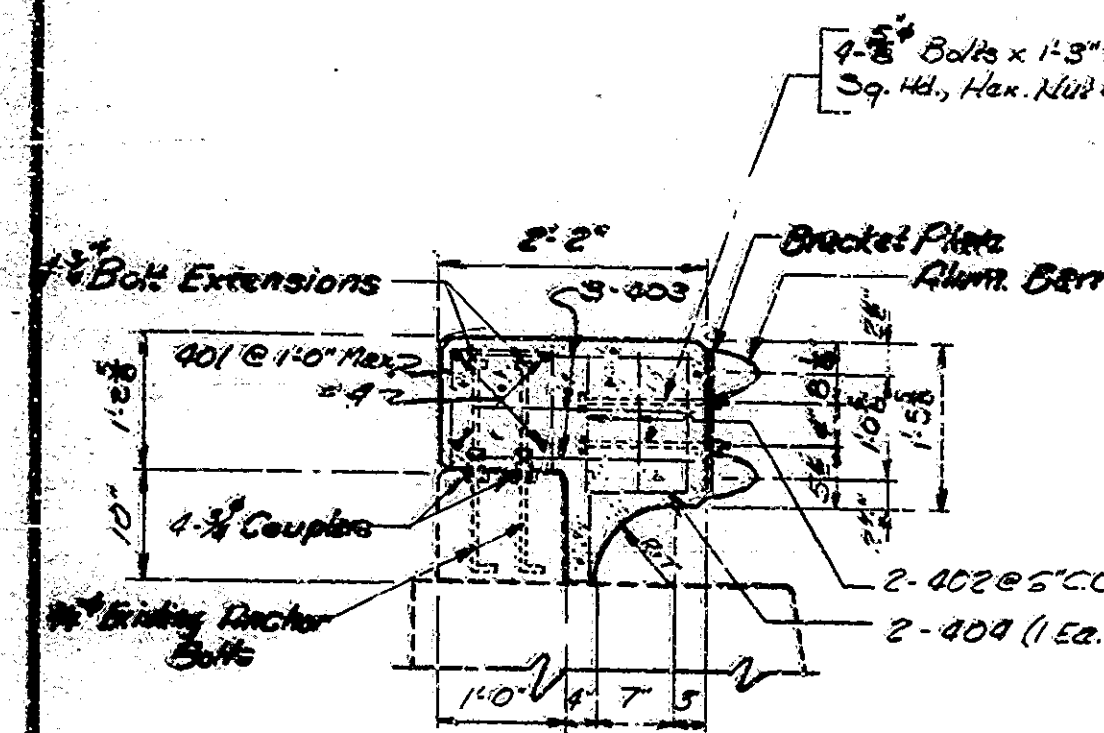
Barrier Railing Type Y shall extend full length along both copings of both the Northbound and Southbound Structures.
 Clean and surface seal the roadway face and top of curbs, walks, parapet walls, concrete railings and all exposed surfaces of new concrete brackets.

PAY ITEMS

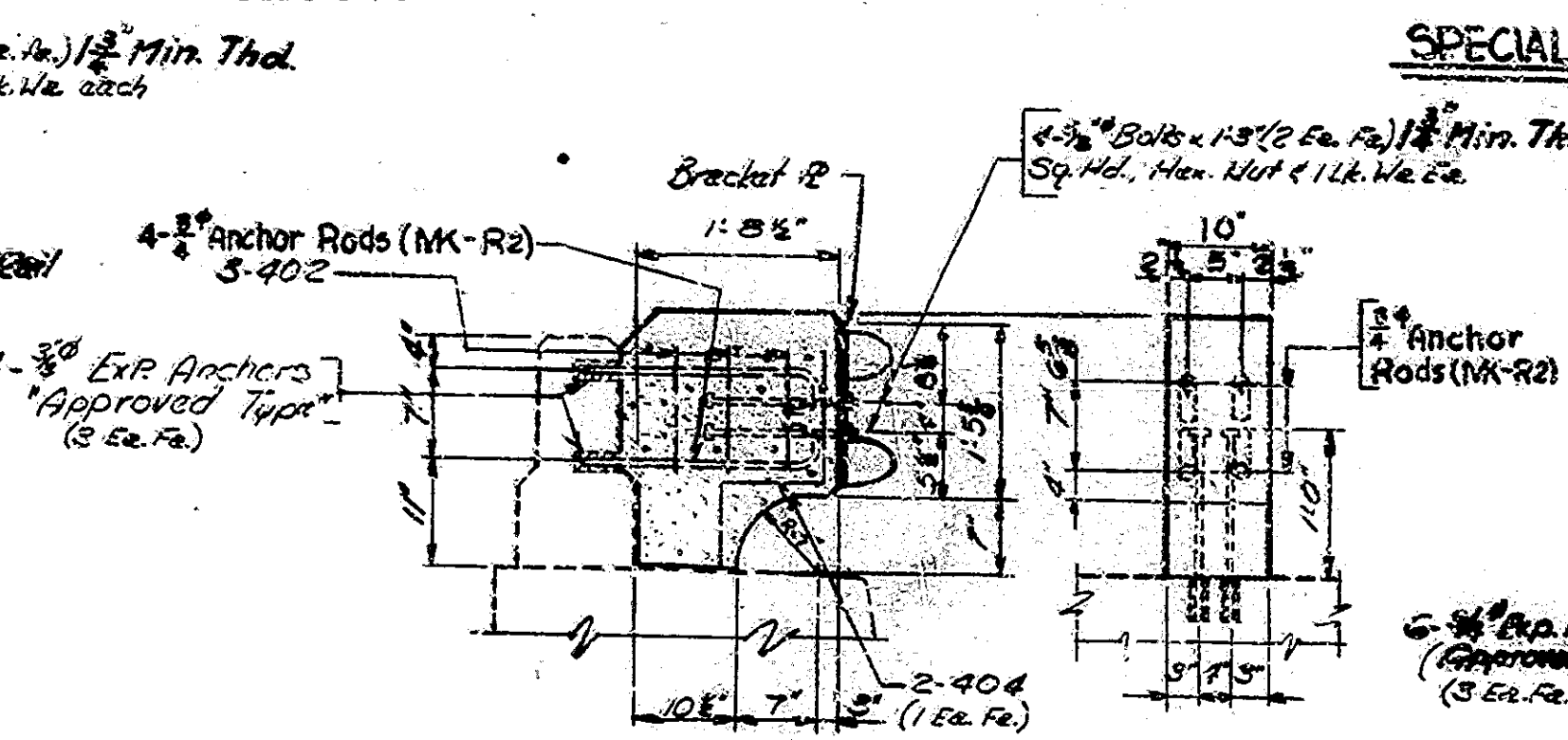
Removal of Present Railing = 824 Lin. Ft.
 Barrier Railing, Type Y = 1071 Lin. Ft.

GENERAL NOTES

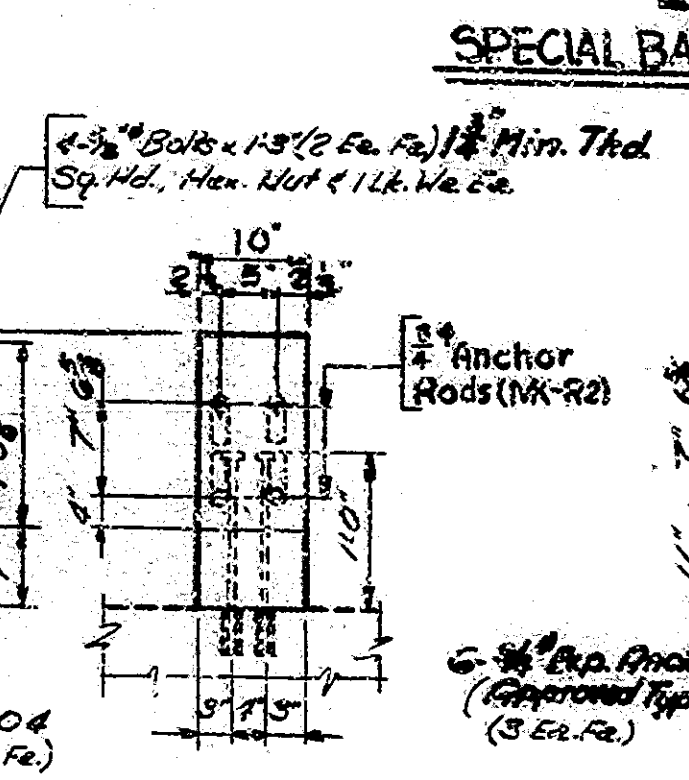
* Expansion Anchors shall be of a type approved by the Engineer. They shall be a minimum of 3 inches in length and capable of pulling out test of 12,000 pounds. Concrete in brackets and parapet walls to be class 40. Chamfer exposed concrete edges 1/4 inch. Standard Drawings Required: 581, 582, C.
 * As an alternate, an aluminum plate may be used. If used, it shall be aluminum alloy 6061-T6 conforming to ASTM B-209. Plates shall be free of sharp edges and irregularities.



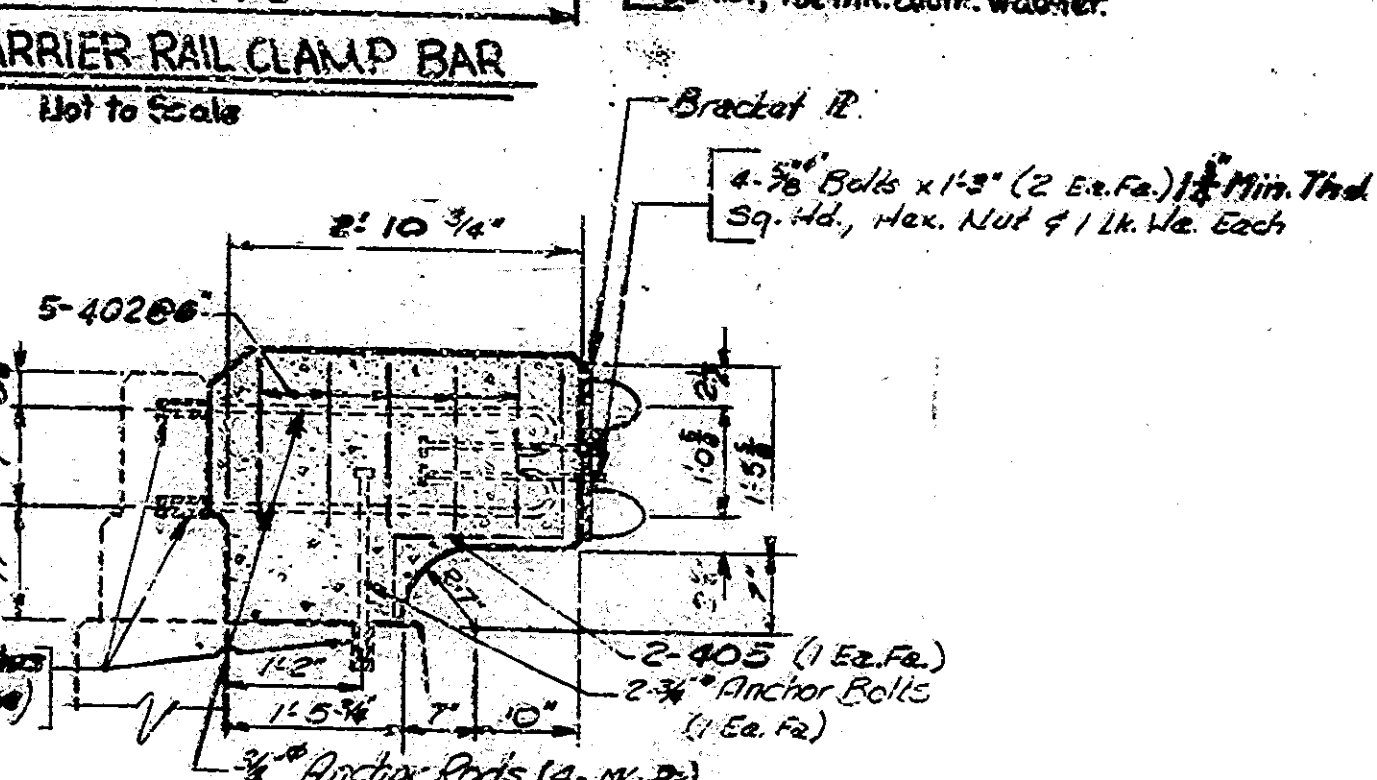
BRACKET D SECTION
 Scale: 3/8" = 1'-0"



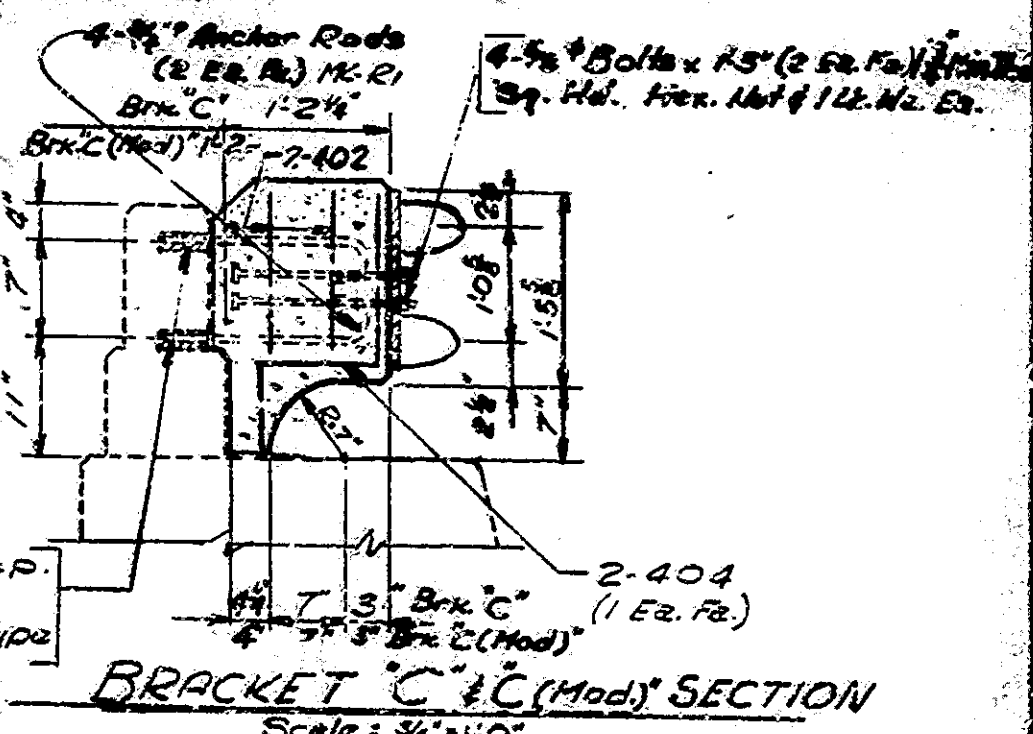
BRACKET B SECTION
 Scale: 3/8" = 1'-0"



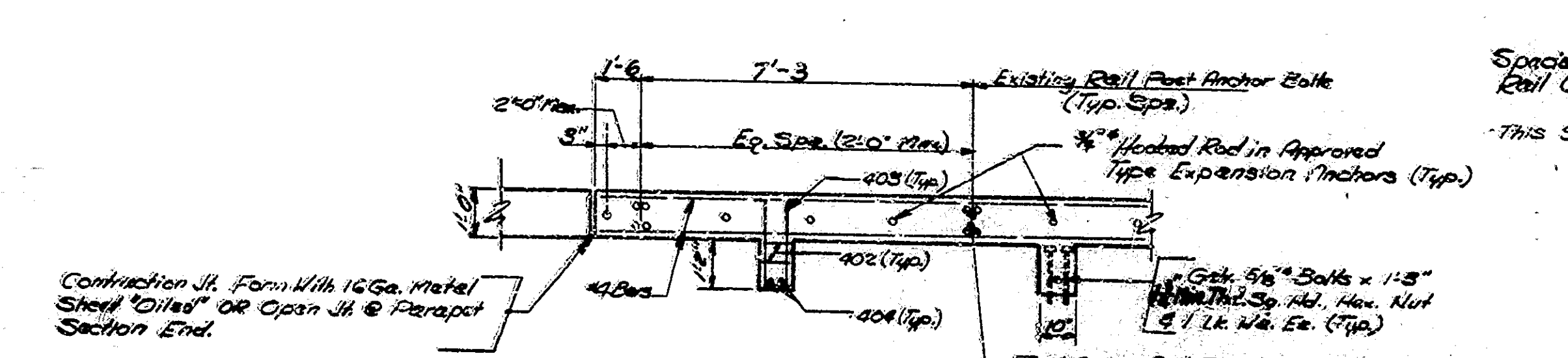
BRK. A & B ELEVATION
 Scale: 3/8" = 1'-0"



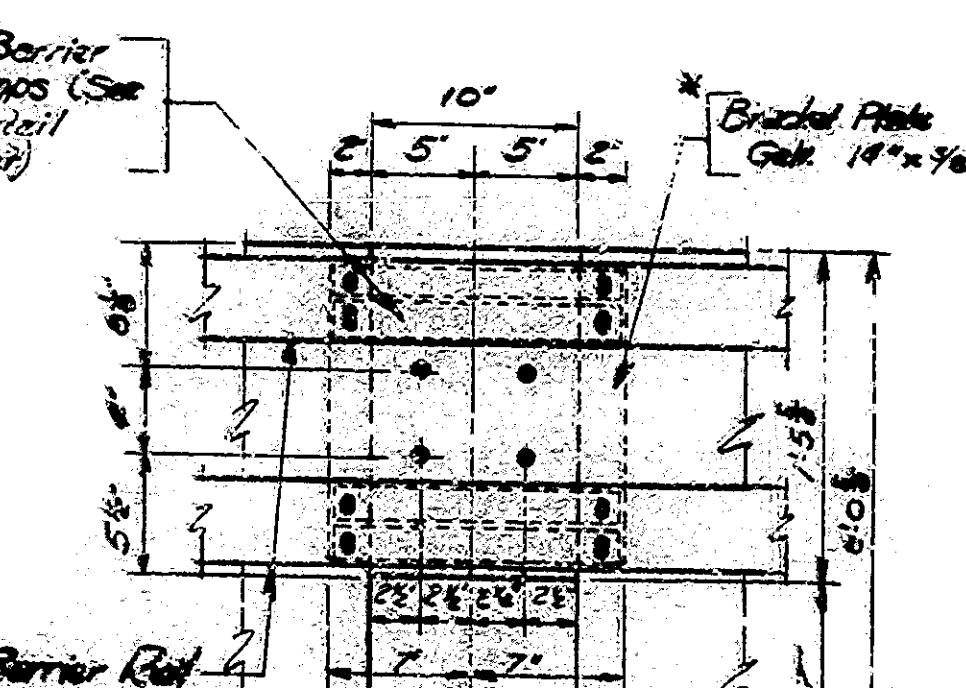
BRACKET A SECTION
 Scale: 3/8" = 1'-0"



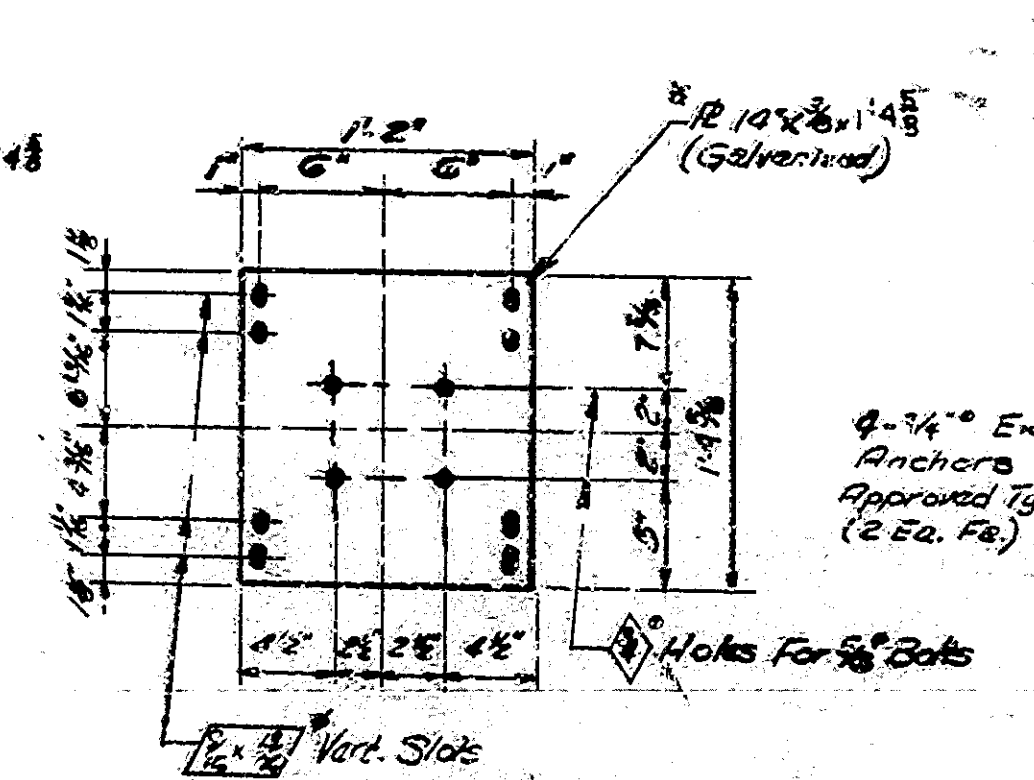
BRACKET C & C (Mod) SECTION
 Scale: 3/8" = 1'-0"



PART PLAN PARAPET WALL
 Not to Scale



ELEVATION BRACKET
 Scale: 3/16" = 1'-0"



DETAIL BRACKET PLATE
 Scale: 1/16" = 1'-0"

1'-3"	R1
1'-9"	R2
3'-0"	R3

- NK-R1 x 1'-11"
- NK-R2 x 2'-5"
- NK-R3 x 3'-5"
- 3/8" ANCHOR RODS (Threaded)

DESIGNED	CKD
DRAWN	CKD
TRACED	CKD

INDIANA STATE HIGHWAY COMMISSION
 ON I-65 1/2 MILE N.W. OVER HADY FORT CREEK
 SCALE: As Noted
 DATE: JUNE 22, 1977
 RECOMMENDED FOR APPROVAL: [Signature]
 DRAWING: R1 of 1
 PROJECT: I-65-1(77) P.E.
 CONTRACT NO. R-10-75E
 BRIDGE FILE: I-65-11-4130A
 SHEET: 1 OF 1

END STR